



# Motel Information Pack

*“Management and staff are always so friendly and are always very keen to make your stay as enjoyable as possible. We have been staying at Burrill Pines Motel for many years now and we keep coming back. My wife and I can recommend staying at Burrill Pines Motel. It’s set in tranquil settings and can be a very relaxing experience.”*

— Ken Murray

## About

As you enter Burrill Pines, the Motel rooms are on your left and right and face the Princes Highway. We have 9 air-conditioned ensuite rooms available. Our units cater for single, double, triple and a family accommodation. We also provide BBQ facilities for our guests. Wairo Beach is a short drive or 1km bush walk from the front door.

Rates	Single	Double	Triple	Family
Peak Season (per night)* Dec, Jan & Long Weekends	\$154	\$154	\$165	\$186
Shoulder Season (per night)* Feb, Mar, Apr, May, Sep, Oct & Nov	\$110	\$121	\$132	\$154
Low Season (per night)* Jun, Jul, Aug	\$99	\$110	\$121	\$143

\*excludes School Holiday periods, long weekends (See Peak pricing, minimum 3 night booking on long weekends)

### Cancellations and Refunds

#### NON PEAK

- 15 to 30 days prior to arrival – Your Deposit will be forfeited
- 14 days prior to arrival - a cancellation fee of 100% of monies paid will apply.

#### PEAK Holiday Periods -

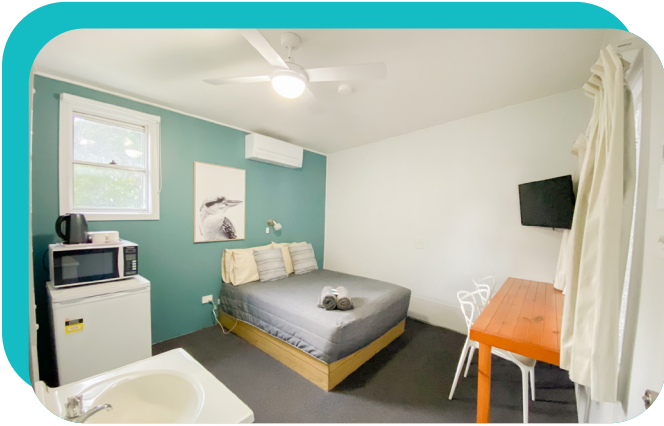
- Cancellations within 30 days Booking MUST be paid for in full. No refunds given within 30 days of cancellation.
- cancellations 60-30 days prior to arrival deposit forfeited.

Non-refundable/ transferable.

\*Minimum Nights booking may apply.

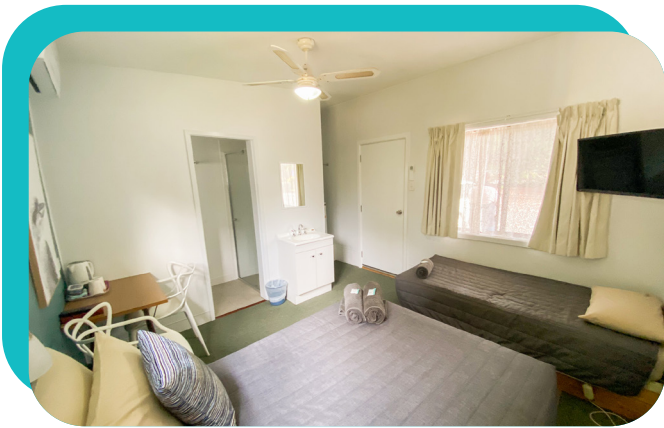


# Burrill Pines Motel Rooms



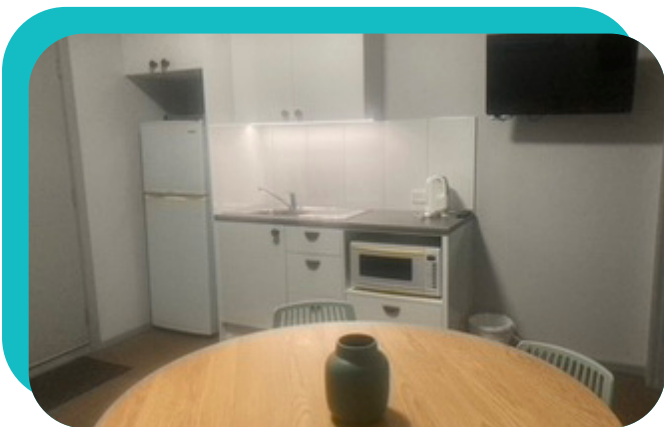
## Single/Double Room

- Room 4, 6, 8
- 1 x Double Bed (Room 8 has a Queen Bed)
- Small Bar Fridge
- Air conditioner and ceiling fan
- Microwave, toaster, electric jug
- All cutlery, plates and cups for 2 guests
- Ensuite with toilet and shower



## Triple Room

- Room 3, 5, 7
- 1 x Double bed
- 1 x Single bed
- Small bar fridge
- Air conditioner and ceiling fan
- Microwave, toaster, electric jug
- All cutlery, plates and cups for 3 guests
- Ensuite with toilet and shower



## Family Accommodation

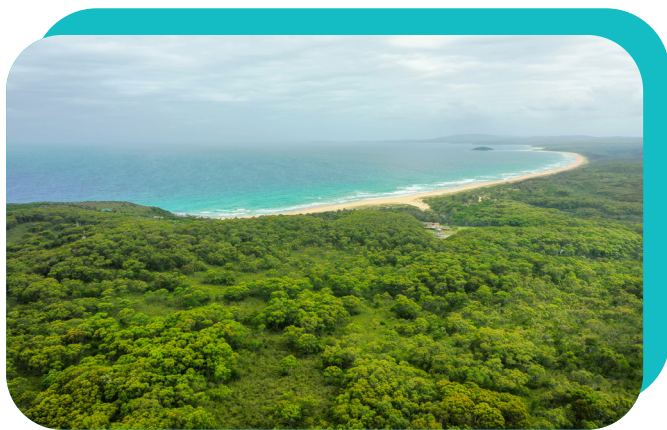
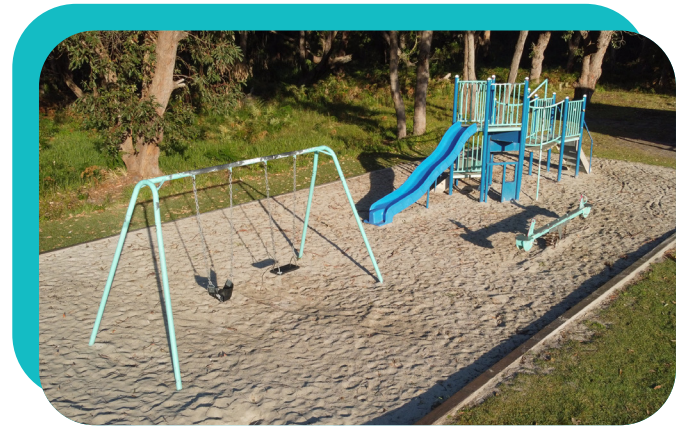
- Room 1
- Main bedroom with a queen bed
- Separate bedroom with a single bunk style bed and a single bed.
- Bathroom: toilet, shower/bath, basin.
- Split system air conditioner
- Kitchen: Including: large fridge, microwave, kettle, toaster, electric frypan, plug in hot plate, plates, cutlery, glasses, mugs etc.



# Things to Do

## Burrill Features

- Private beach access
- Kids Playgrounds
- Oval
- Volleyball Court
- BBQ Facilities



## Nature

- Wairo Beach: 3 min walk / entrance at camping ground
- Burrill Lake: 3 min drive
- Bawley Beach: 20 min drive
- Hike / Ride
- Barnunj Mountain Bike Trail: 500m / 6 min ride
- South Pacific Heathland Reserve Walk: 1.8 km walk / level: easy
- Pigeon House Mountain: 5 km return / ~ 3 hour walk

## Food & Fun

- Funland Ulladulla: 10 min drive to Arcade
- Dunn Lewis Centre: 10 min drive to Ten Pin Bowling
- Clyde River Berry Farm: 35 min drive to Berry Picking
- Lagom Bakery: 3 min drive to Fresh Bread
- The Fish Shop: 3 min drive to Fish & Chips
- Rosie Oats Cafe: 3 min drive to Coffee & Brunch





# Conditions of Entry

## Burrill Pines Motel & Lagoon Point Conference Centre

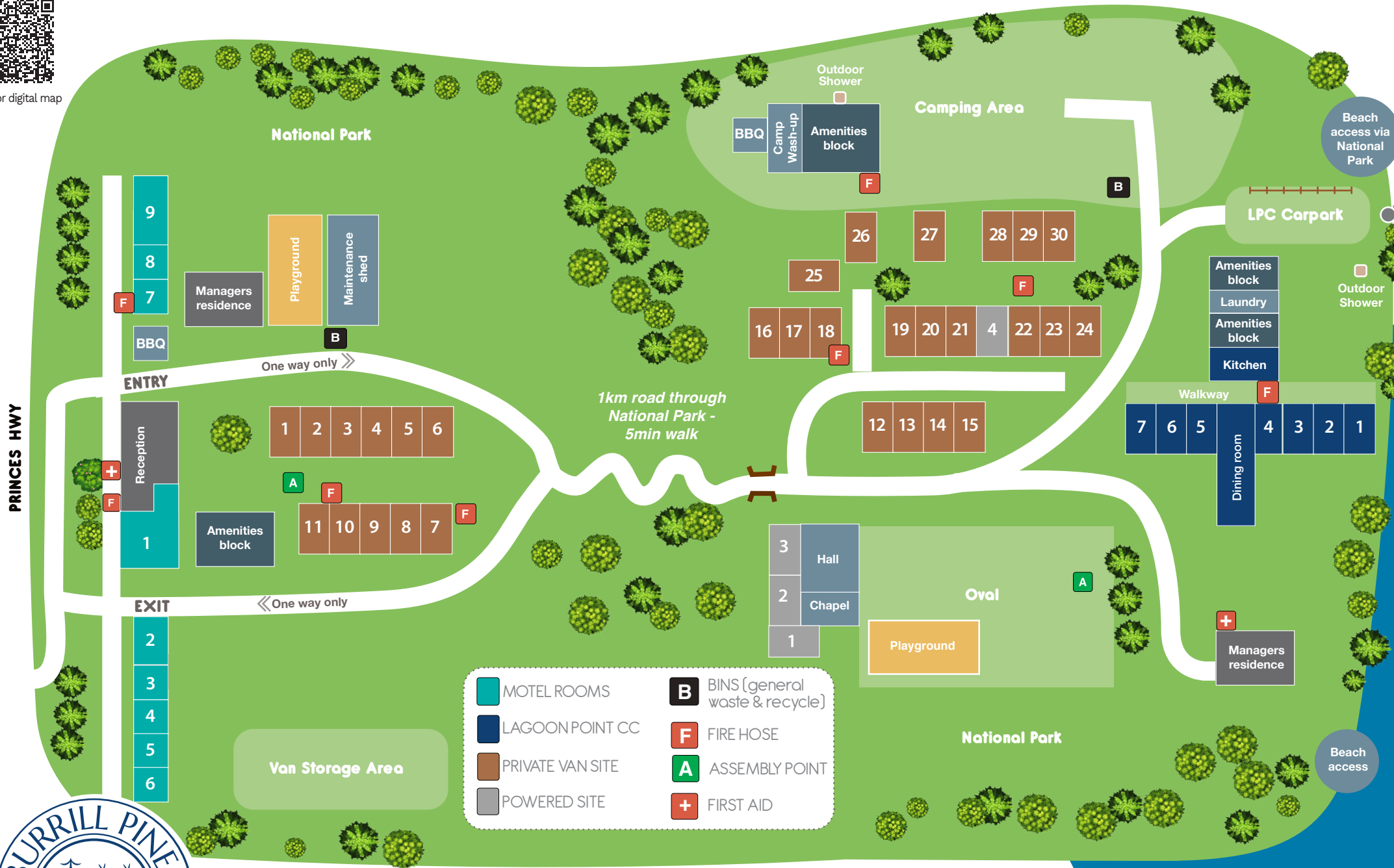


Burrill Pines endeavours to provide a peaceful and relaxing environment for everyone within our park. With this in mind we ask all guests to please note the following:

- Be considerate: Please be considerate of other guests' right to a pleasant stay.
- Respect property: Be respectful of all park property. All breakages must be paid for.
- Anti-social behaviour: Drunk, disorderly, anti-social behaviour and offensive language will not be tolerated.
- Speed limit: Strictly 20km/hr on access road connecting Conference Centre and motel area. In all other areas of the park the roads are a shared traffic zone and motorists are restricted to WALKING PACE ONLY.
- Smoking: Smoking is not permitted in or around the buildings.
- Pets: Burrill Pines is a pet free environment.
- Noise levels: We don't allow loud music at any time and no loud noise after 10pm. For the comfort of all our guests, our quiet period is between 10pm - 7am. If there is unsatisfactory noise levels, contact management for assistance.
- Cooperation with staff: We ask that all guests cooperate with staff direction. Staff reserve the right to ask guests to leave the premises if unwilling to adhere to the conditions of entry in our park.
- Check in/out: Check in time is from 2pm to close. After hours check in must be organised prior to the office closing time. Check out time is 10am unless otherwise approved by the office.
- Visitors: Visitors must check in at the office and obtain a visitor's pass before entering. The visitor's pass is \$5 per guest.



Scan for digital map



### Burrill Pines Motel and Lagoon Point Conference Centre

F275A Princes Highway, Burrill Lake NSW 2539

**Phone:** 02 4455 1224 **Email:** info@burrillpines.com.au **Web:** www.burrillpines.com.au

**Off ce Hours:** 9am - 5pm | Fridays till 6pm , Sundays till 5pm